

## Lab 7.3.1: Installation Demonstration of Windows 2000

**Estimated time:** 90 Minutes

### Objective

In this exercise, you will learn how to install and run through a Windows 2000 installation step by step.

### Equipment

The following equipment is required for this exercise:

- A computer with a blank hard disk

### Scenario

You are troubleshooting a computer and have been working on it all day. The file system has become corrupt because the user installed software that was infected with a virus. During installation of the software, the virus deleted all files on the hard drive.

### Procedures

In this lab, you will learn how to install the Windows 2000 Professional Operating System.

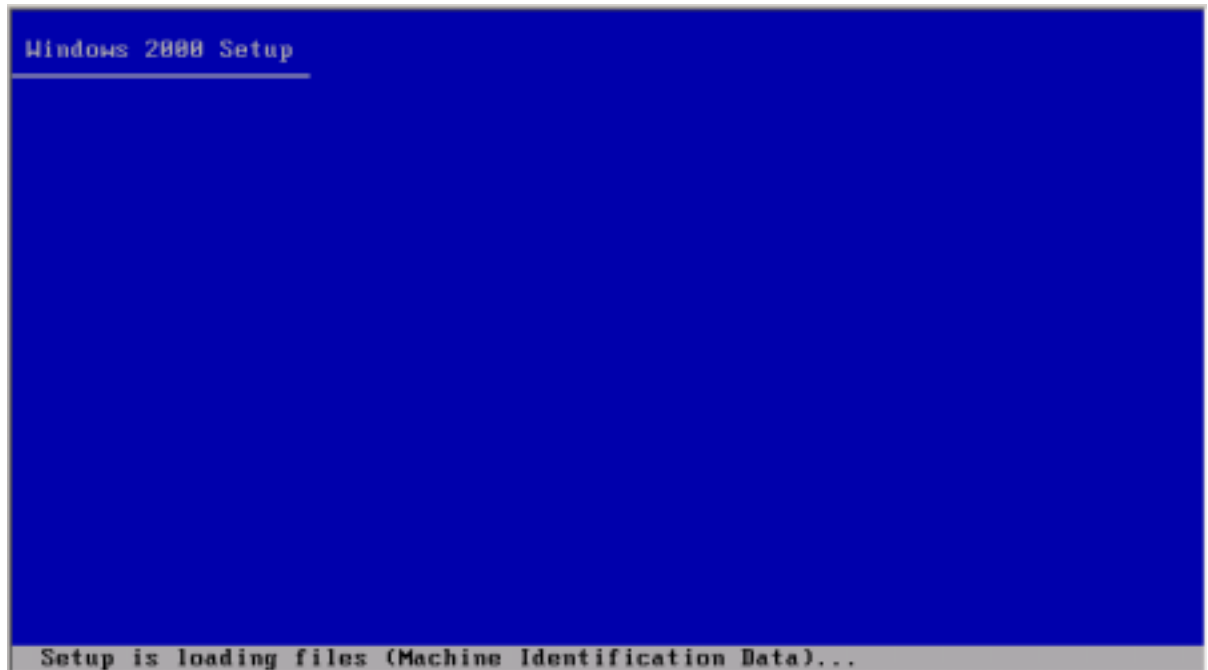
#### Step 1

Insert the CD into the CD-ROM Drive.

Next, configure the system's BIOS boot sequence to boot from the CD-ROM first. Keep the CD in the drive and restart your computer.

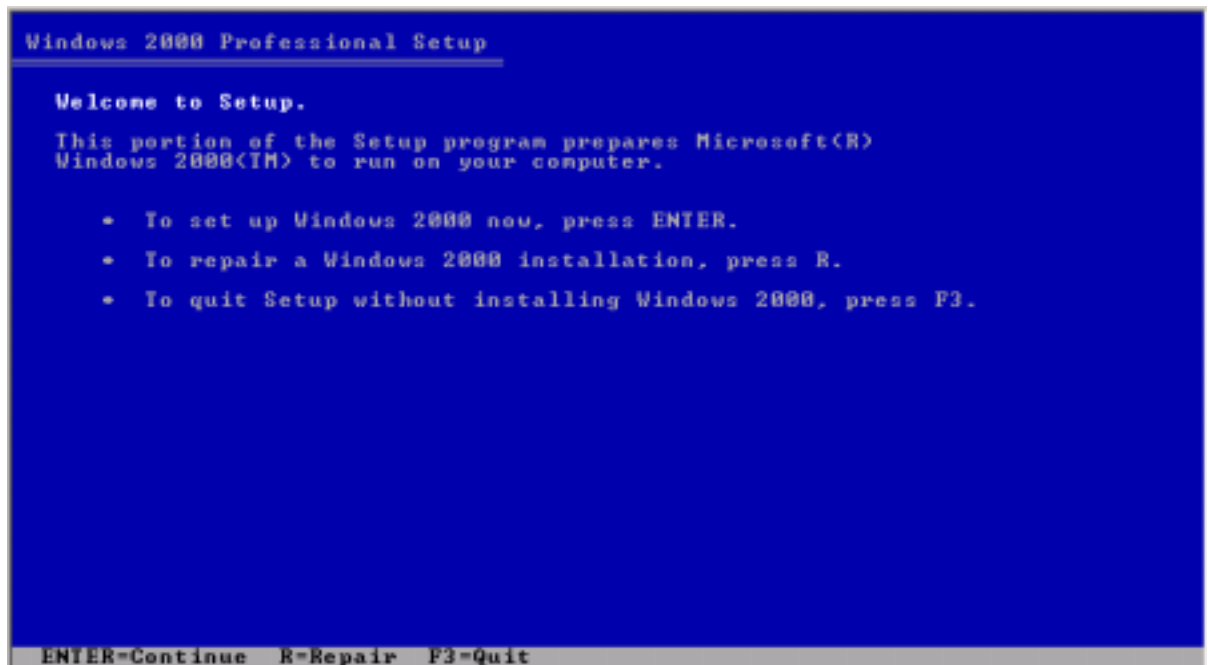
When the system starts up, watch for the following message "Press Any Key to Boot from CD". When it appears, hit any key on your keyboard and boot the system from the CD.

The Windows 2000 Setup Screen will display and load the necessary files.



This screen will display for a few minutes while it copies the files to the hard drive.

The “Welcome to Setup” screen displays next. Press **Enter** to proceed with the installation.



The “Welcome to Windows” screen will display. Press **F8** to agree with the Licensing Agreement.

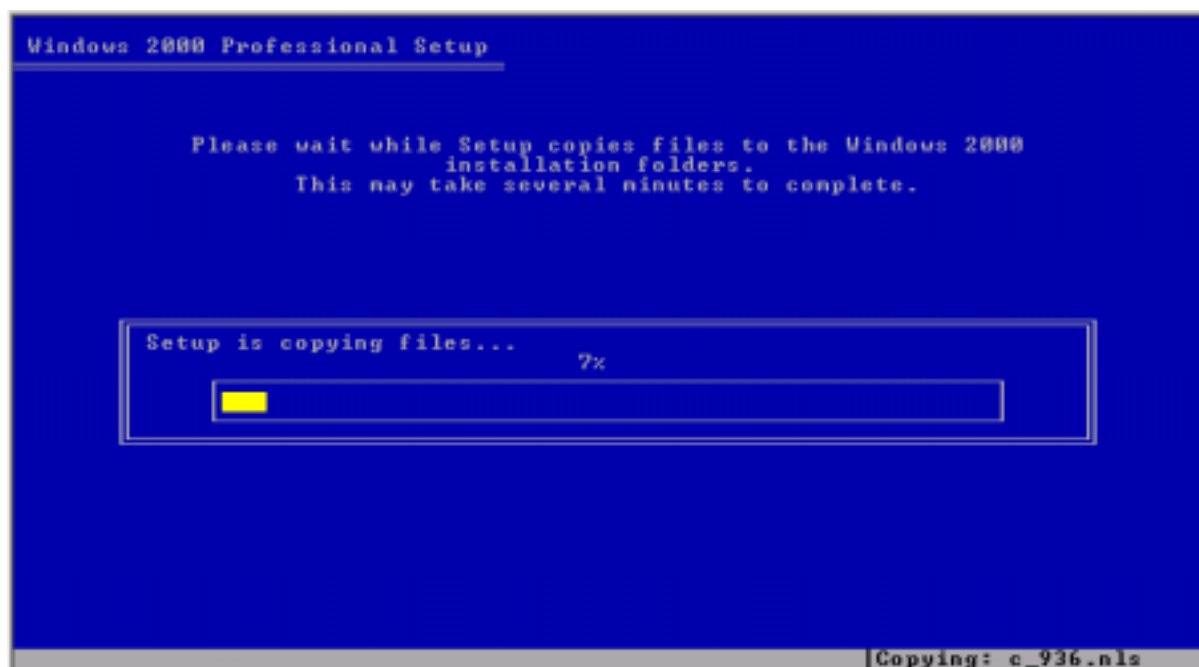
The next step is to partition and format the drive if needed. It is not always required. For

this lab, create a small partition (2 GB) for installing Windows 2000. This will make the installation a faster process.

Select the option to partition the drive first, then select the option to format the drive with NTFS.

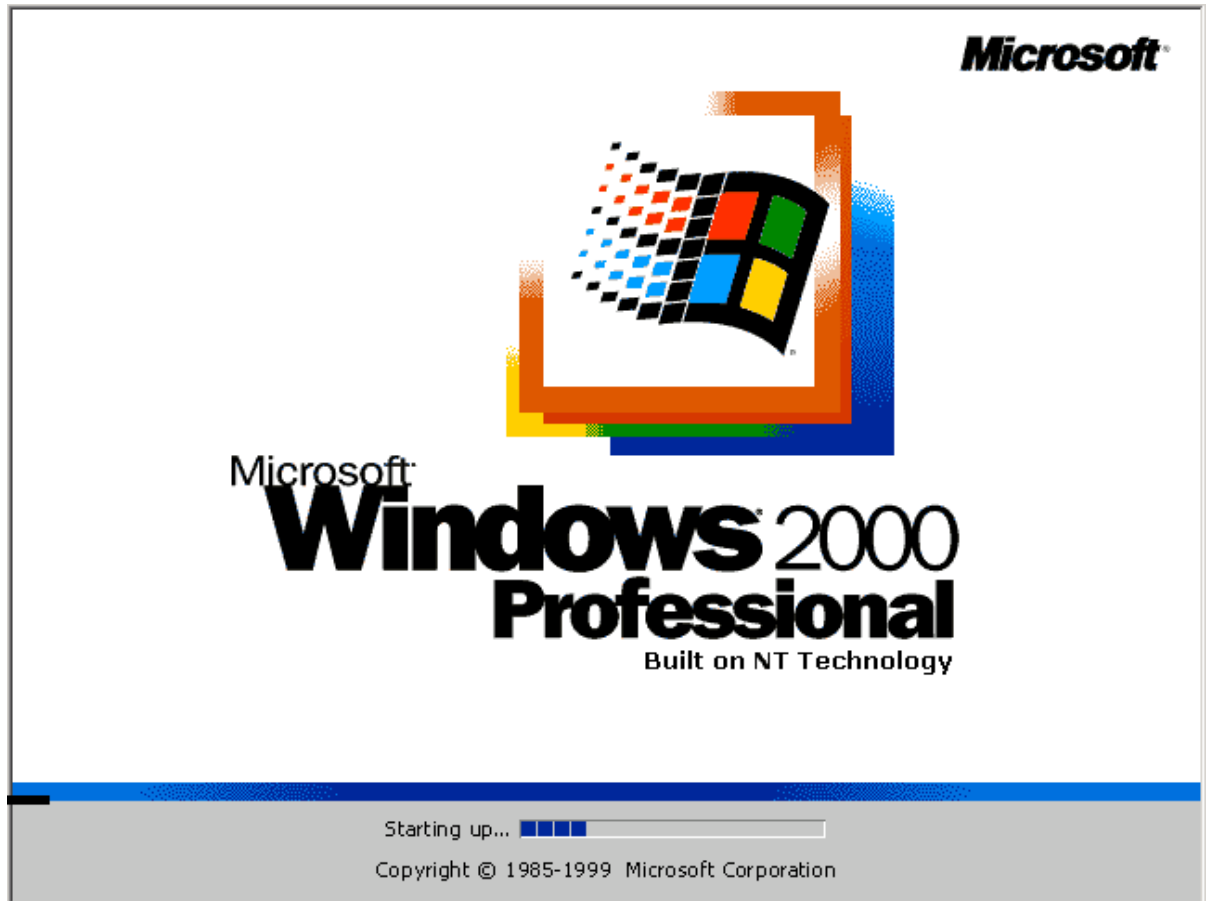
Setup will begin formatting the partition.

When partitioning and formatting is complete, the Windows 2000 Professional Setup screen will display and start copying the system files to the hard drive.

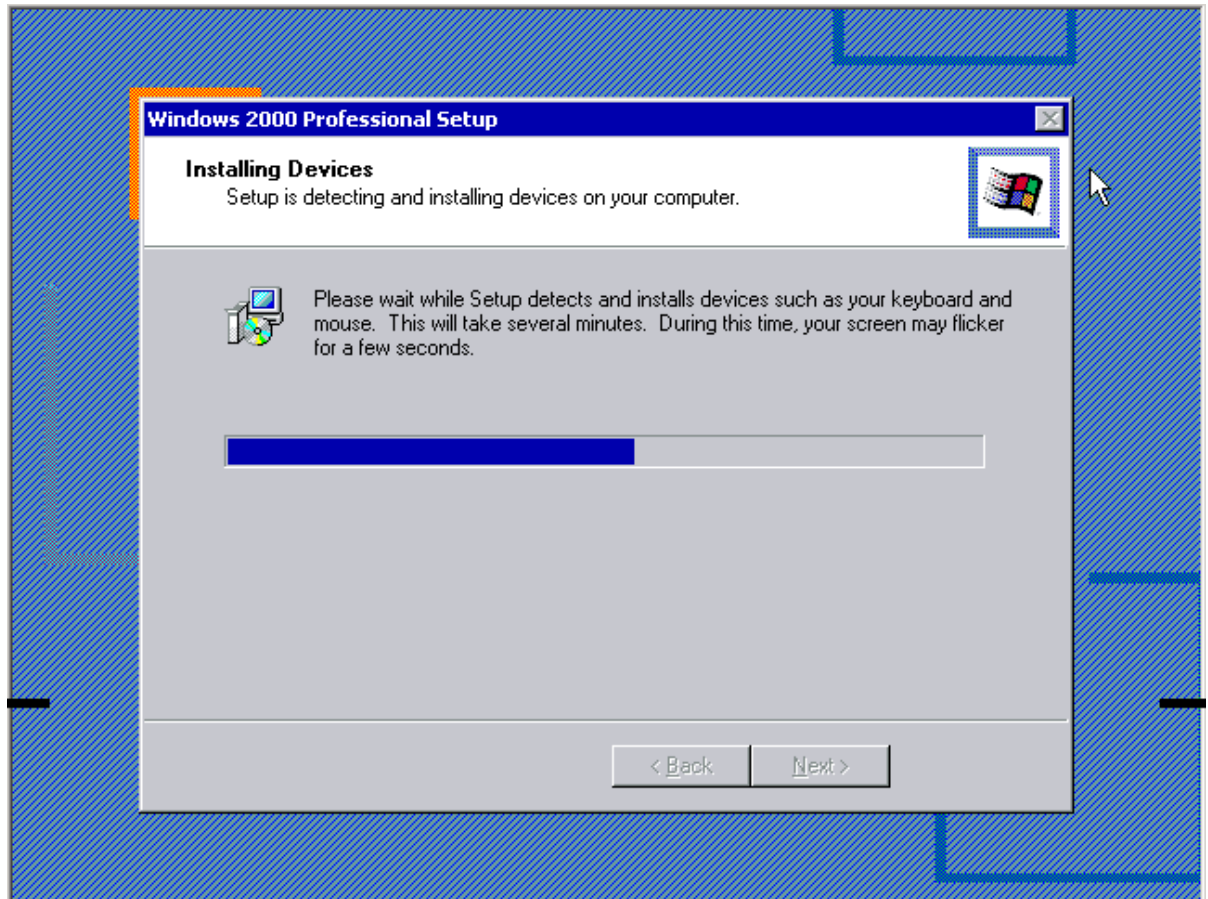


The system will restart automatically when the files have been copied. When the system restarts, the message "Press Any Key to Boot from CD" will display again. This time, you do not want the system to boot from the CD again.

The Windows 2000 splash screen will display.



The "Welcome to Windows 2000 setup" screen will display. Click **Next** to proceed to the "Installing Devices" screen.



When the system is done installing the devices, setup will proceed to the Regional Setting Screen.

You can change these settings if you need to, but for this lab, press **Next**.

On this screen you will enter your name and the name of the company. Click **Next**.

Enter the Microsoft product registration key when prompted. Click **Next** to continue.

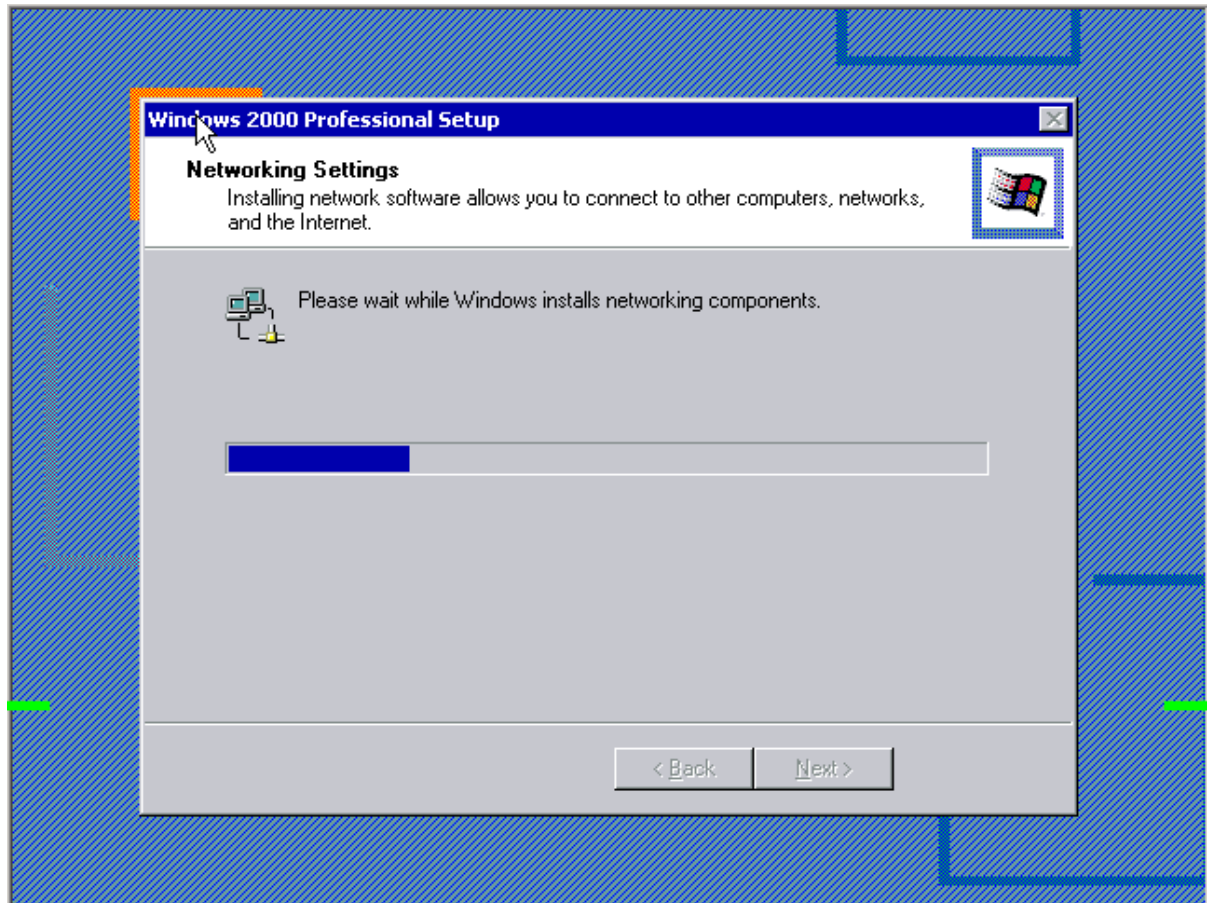
The "computer name and administrator password screen displays next. Enter the computer name and the administrator password.



Accept the name suggested by setup or enter the name assigned to this computer by the network administrator. Enter the word "password" for the password. Click **Next**.

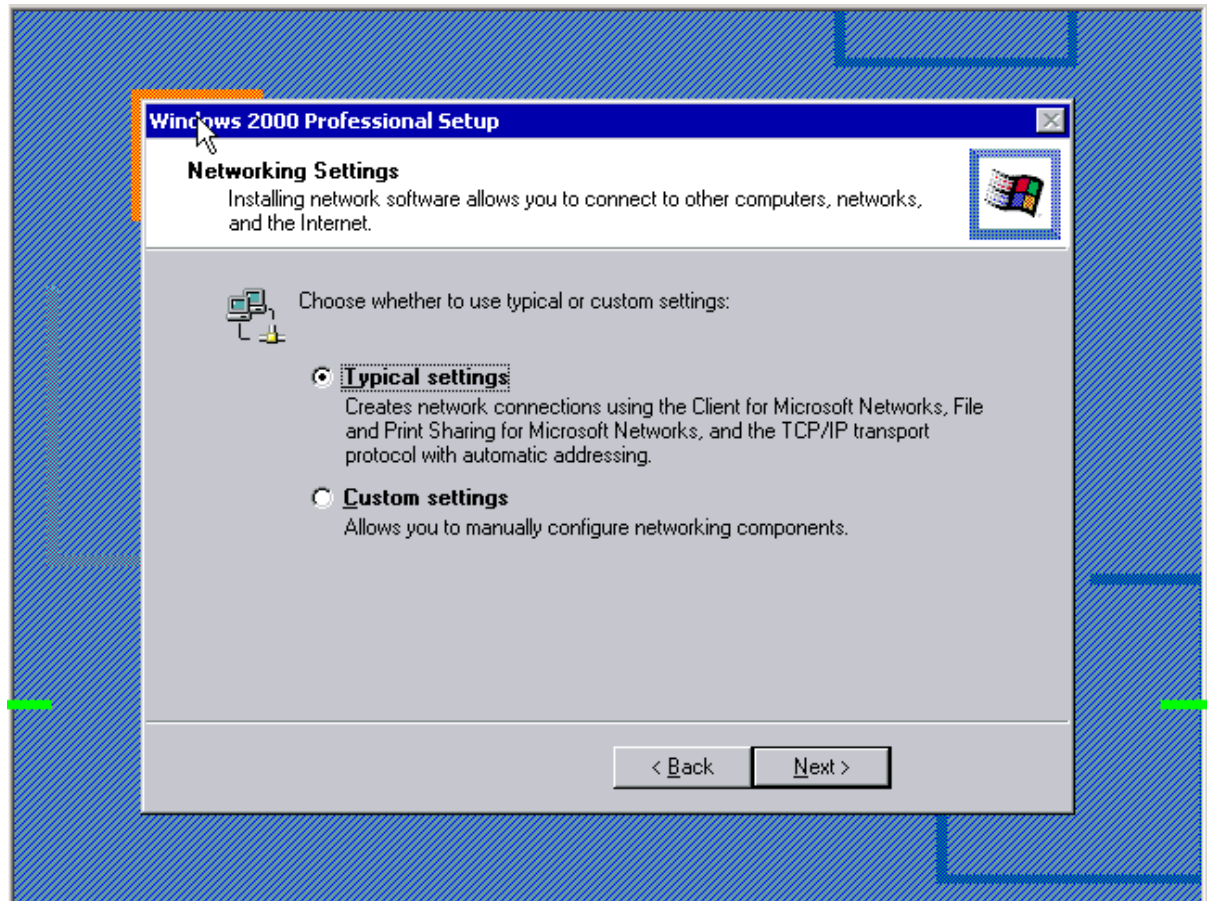
Enter the appropriate Date and Time settings for your region. Click **Next**.

Setup will now proceed to the Network Settings Screen.



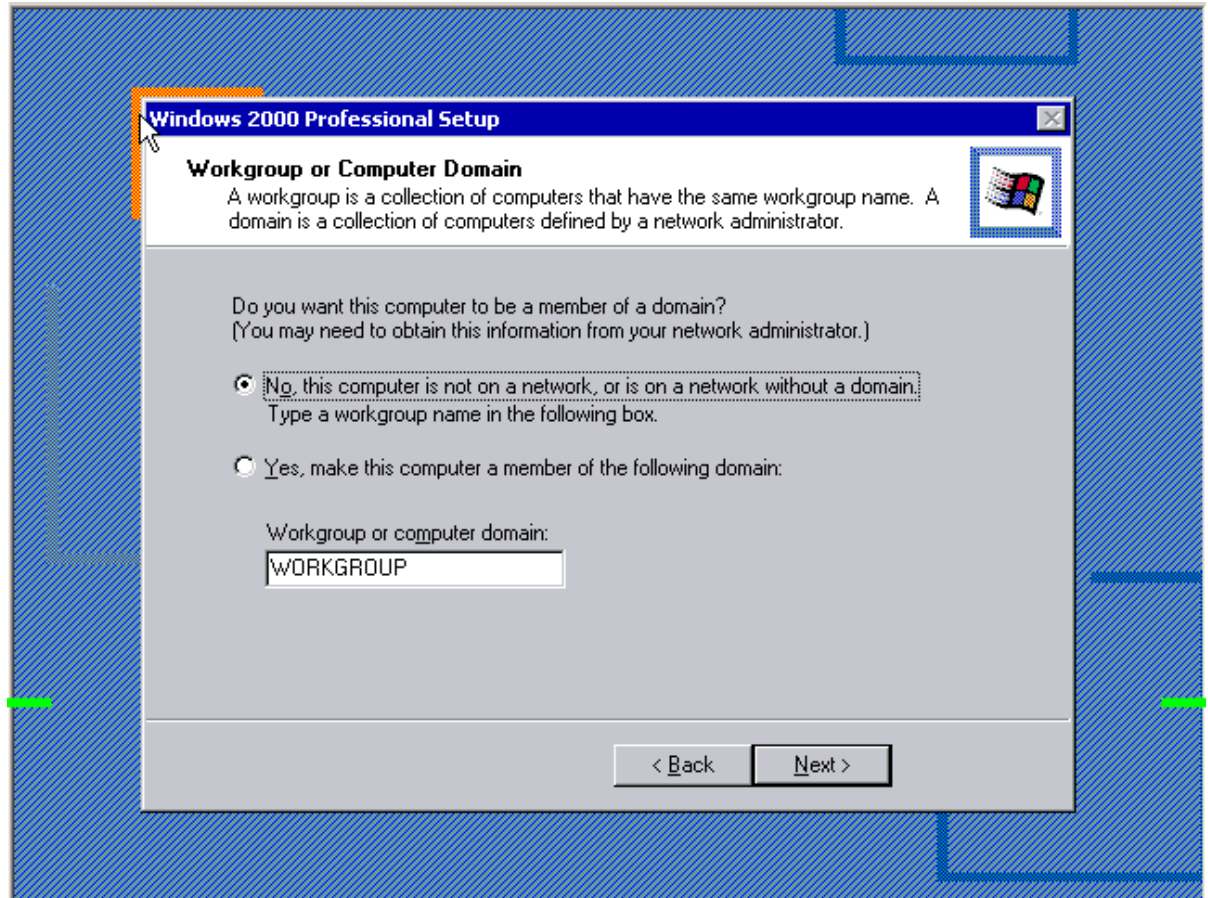
The networking components will be installed during this phase of Setup. When complete, click **Next**, to proceed to the next step.





Select the “Typical Settings” radio button to install the default network settings and then click **Next**. Custom Settings allows you to install other network components that are not used in this lab.

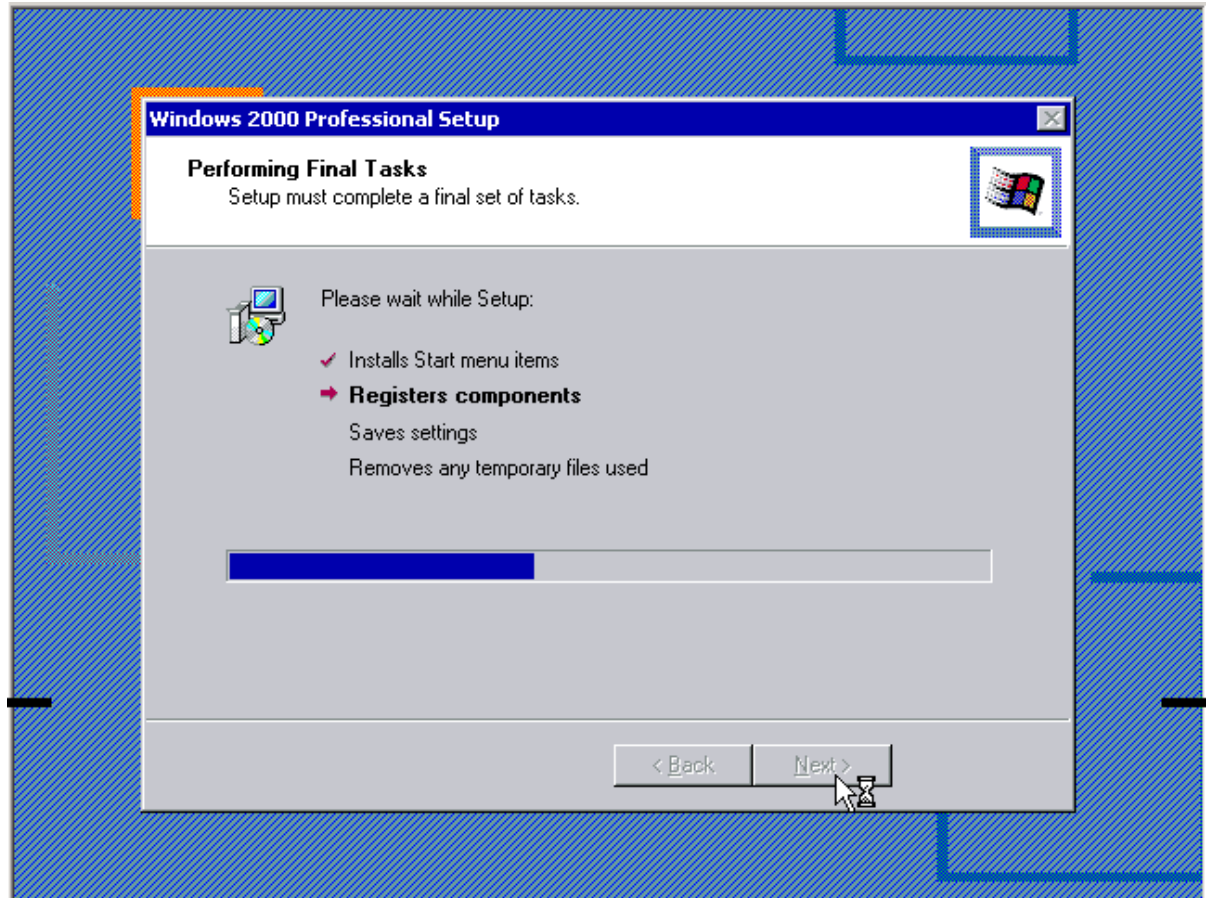




The Workgroup or Computer Domain screen allows you to join a domain. This is important when the computer is on a network and requires a domain name and password.

For this lab, select the “No, this computer is not on a network, or is on a network without a domain” radio button. Click **Next**.

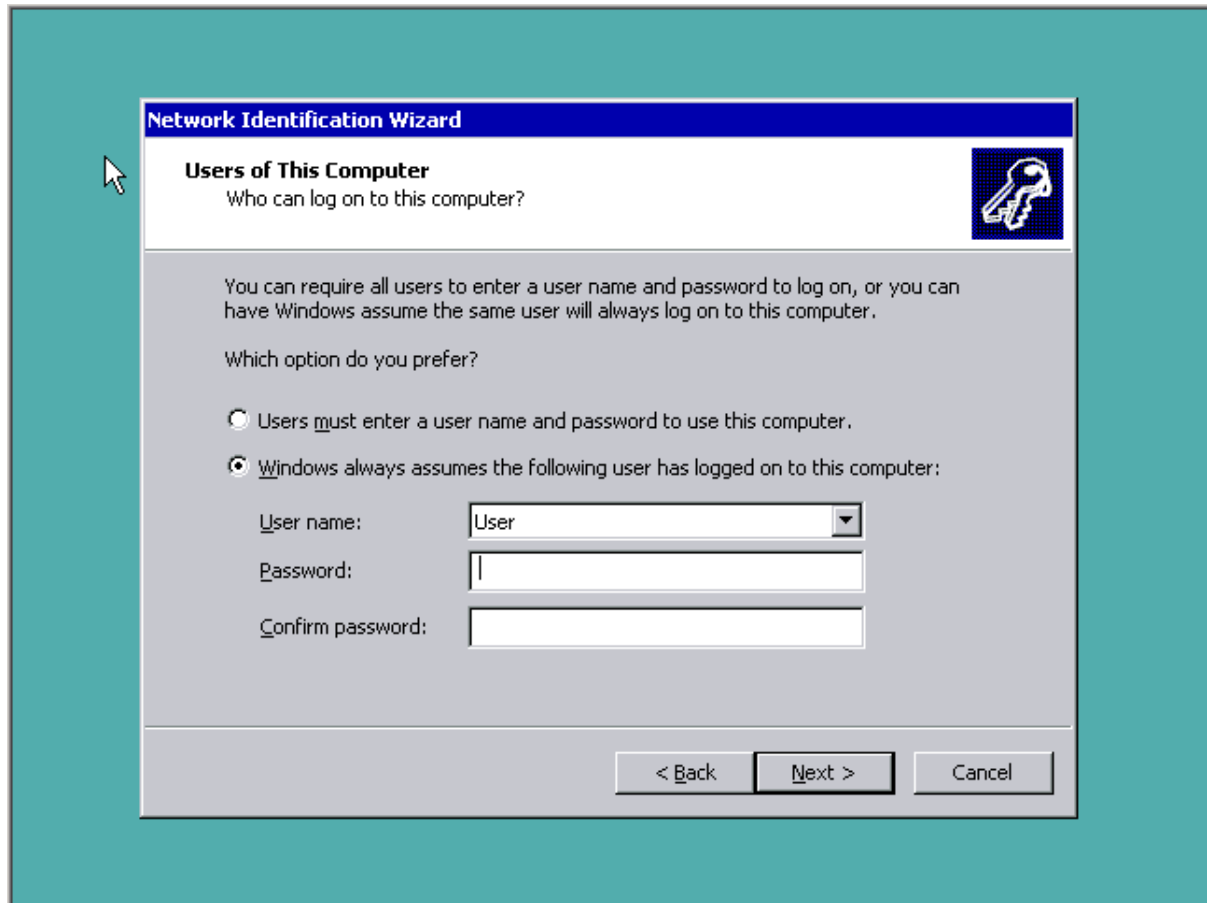
“Performing Final Tasks Screen” is next.



This is the final step of the Setup process. It will take the longest to complete but once it has finished, click **Next**.

The computer will automatically restart. Ignore the “Press any Key to Boot from CD” message and do not Boot from the CD

The Windows 2000 splash screen will display and the “Network Identification Wizard” will start.



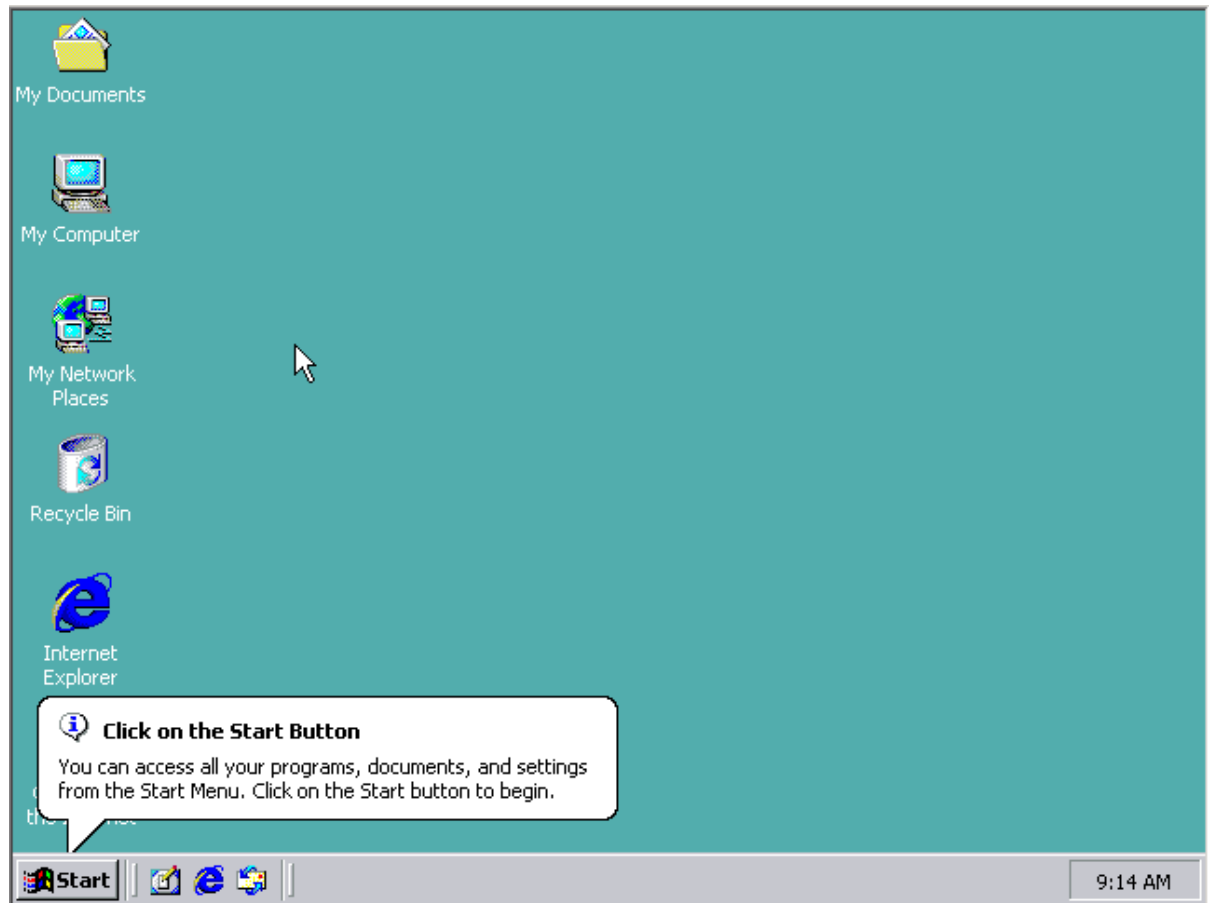
Select the "Users must enter a username and password to use this computer" radio button.

This will require all users to have an account created on the computer before they will be allowed to log on. Click **Next**.

To complete the Network Identification Wizard, click **Finish**.

The log on box will display. Log on with the Administrator account and password that you created during Setup.

The system will now log you on and launch the Windows 2000 Desktop.



Windows 2000 has now been successfully installed.

### Troubleshooting

Before doing the installation, confirm that you have the proper hardware requirements on your system. Also make sure that you are installing the operating system on a blank partition or hard drive that has enough space. If your hardware is compatible and you have sufficient space on your drive or partition then you should not run into any problems with the installation.

### Reflection

Did your Windows installation complete successfully? \_\_\_\_\_

If you needed to install Windows on another system, do you feel confident that you would be able to? \_\_\_\_\_